

CUSTOM STAINLESS ENCLOSURES, INC.

4XXtreme® **4X**Protect®

ENCLOSURE CATALOG

**BUILDING YOUR
ENCLOSURES
YOUR WAY!**

 651-500-3650

 4xxtreme.com

 sales@4xxtreme.com

 203 E 8th St
Marshfield, WI 54449



TYPES:
4X, 4, 12, 3R, 3, 1



IEC Protection Ratings:
IP69K, IP69, IP66, IP68

ABOUT

CUSTOM STAINLESS ENCLOSURES, INC.

Custom Stainless Enclosures, Inc. manufactures custom stainless steel electrical enclosures for all industries. We are the proud manufacturer of 4Xxtreme® Enclosures. We have dedicated our time, knowledge, and effort to developing a revolutionary product that will change the way you view electrical enclosures forever.

OUR STORY

Over 12 years ago, while installing electrical enclosures on the kill floor of protein processing facilities, we discovered that existing enclosures couldn't withstand the plant's harsh washdown environments. All the major electrical enclosure manufacturers were using the same "Foam In-Place" non-replaceable gasket system, which we found when in harsher environments the gaskets would crack, absorb water, and eventually fall off, in less than 6 months.

At that point, we decided to develop a better enclosure, creating a solution not just for the protein industry but a new standard of enclosures for all industries facing today's harshest environments.

OUR MISSION

To lower our customer's overall cost of ownership for their equipment by providing the best electrical enclosures in the industry through quality, innovation, and relentless improvement.

OUR CERTIFICATIONS & RATINGS

 **US LISTED** Types: 4X, 4, 12, 3R, 3, 1

 **IEC Protection Ratings: IP69K, IP69, IP66, IP68**

CE



THE *4X*Xtreme[®] DIFFERENCE

✓ SUPERIOR DESIGN

- Patented double-seal technology for superior protection
- Field replaceable gasket technology for ease of maintenance
- Single hygienic quarter turn or 3-point handle for simplified operation and a more secure enclosure
- Patented double stud mounting technology welded in place to simplify and reduce enclosure installation time
- Hygienic free draining design for optimal drainage, enhancing cleanliness, and preventing contamination

✓ LIMITLESS...

- Limitless capabilities in manufacturing your "Hygienic IP69K Enclosures" for today's harshest environments
- Extensive range of enclosure top configurations with limitless ° pitched options
- Versatile design configurations (Flanged, Sequester, Multi-Door, Twin Door enclosures, and more)
- Accessories available (Interlocking door assemblies, windows, Hygienic feet, HMI protection covers)
- Customization options for limitless sizes, door quantities, and cutouts per enclosure
- Flexibility ensures every enclosure is perfectly suited to specific requirements

✓ RAPID RESPONSE

- The quoting process is completed in just **1 to 2 days**
- Manufacturing completed in 4 to 5 weeks
- Shop floor equipped with Bystronic's state-of-the-art production software for paperless and efficient operations
- Adherence to stringent quality standards
- Certifications include ISO 9001, UL, CE, ROHS, and REACH, ensuring products meet the highest industry standards

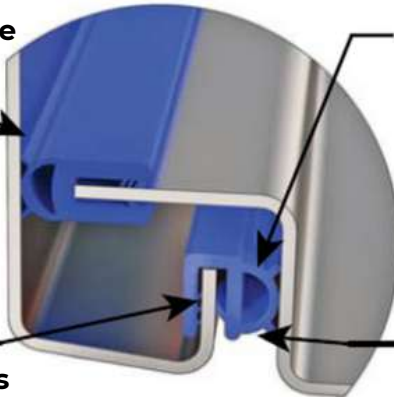
SUPERIOR DESIGN

✓ Double Seal™ Gasketing Technology

Inner Seal is the only seal required for maintaining the Type 4X rating

Blue EPDM Foreign Material Inspectable Gasket System

Return flange makes the door more rigid, requiring less quarter turns

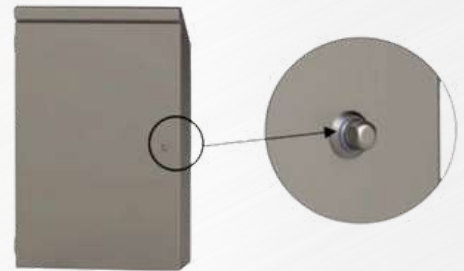


Field replaceable - Blue EPDM gasket system, rated continuous use at 248°F

Outer Seal increases ability to withstand harsher environments

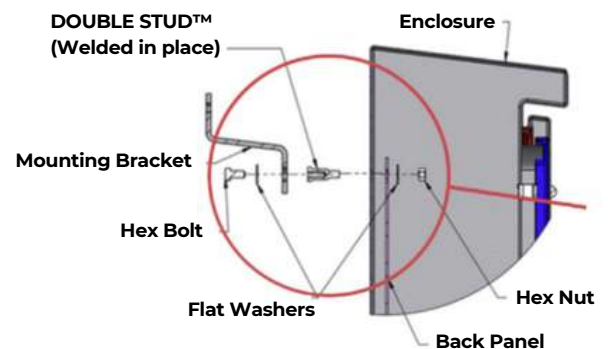
✓ Single Three-Point Door Sealing Technology

- **The Problem?** People simply do not close all the closing points (quarter turns) on electrical doors!
- **Our Solution:** We supply a single closing point per door, for all door sizes as large as 80" High x 36" Wide. This simple effective technology keeps our enclosures dry and helps:
 - Reduce premature electrical failures
 - Increase plant production and revenue
 - Increase plant revenue
 - Reduce "Overall Cost of Equipment Ownership"



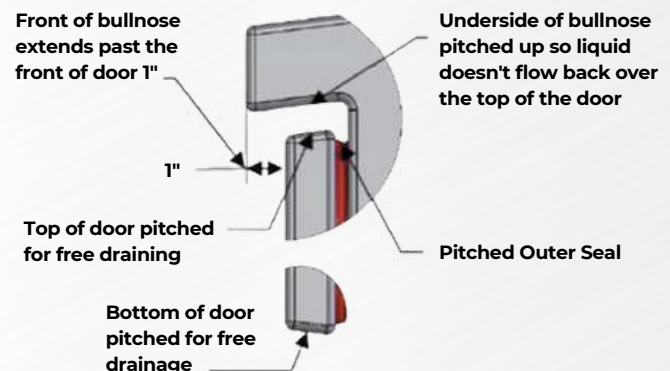
✓ Double Stud™ Mounting Technology

- Simple mounting system that reduces Installation time
- Eliminates mounting gaskets that eventually fail
- Eliminates the need to drill holes in the enclosure for mounting
- Reduces "Overall Cost of Equipment Ownership"



✓ Ultra Clean Free Draining Design

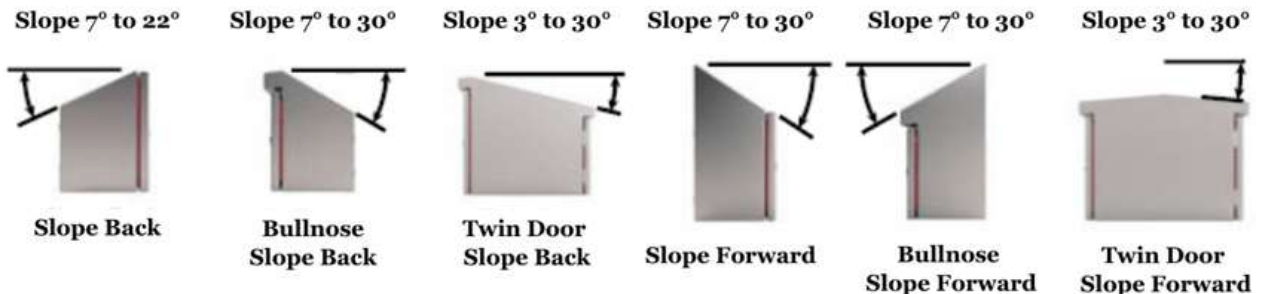
- Hygienically Designed
- Pitched surfaces and outer gasket
- Supplied with weld on bullet style hinges
- All outside welds are continuously welded and ground smooth



LIMITLESS CAPABILITIES

Limitless is the best way to describe our capabilities when it comes to manufacturing your “Hygienic IP69K Enclosures” for today’s harshest environments!

✓ Hygienic Top Configurations



✓ Customizable Enclosure Design Configurations



✓ Limitless Features

- Mechanically interlocked door system
- Hygienic Sequester Enclosure - External disconnect
- Convenience Enclosure
- Hygienic Leg Assemblies – 316 SS material
- Trapped Key Interlock Exchanged Unit enclosure
- Heavy-Duty Lifting Eyes – 316 SS material
- Hygienic Windows: Polycarbonate, Acrylic, or Thermal – Type 4X, IP66, IP68, and IP69K rated
- Center divider available to separate low voltage from high voltage
- Grounding provisions are provided on all doors and enclosures
- Drilled and tapped back panels
- Back panels are available in 12 Gauge G90 Galvanized, Aluminum, Stainless Steel, and Powder Coated
- Hygienic Operator interface swivel arm assemblies – Type: 4X, IP66, IP68, and IP69K
- Floor mount configuration
- HMI 4Xxtreme® Enclosure Covers
- Double Stud™ hygienic mounting brackets: Bolt-on 1, 2, 4 & 10” off wall
- Double Stud™ hygienic mounting extensions: 1, 2, and 3”

OUR MANUFACTURING TECHNOLOGY



SolidWorks 3D Modeling

SolidWorks enables us to create precise, detailed 3D models and simulations, enhancing our ability to innovate and optimize product designs.



BySoft Suite ERP + Microsoft Business Central

Optimizes our production processes, enhances precision, and boosts efficiency through advanced planning and scheduling tools. With Bysoft Suite, we're able to maintain the highest standards of quality and productivity, driving innovation and delivering superior products to our customers.



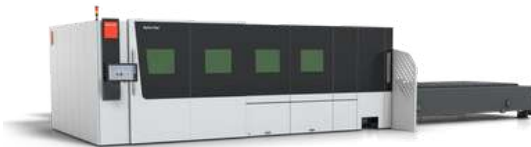
Microsoft Dynamics 365
Business Central

Bystronic Laser

Bystronic's laser technology enables us to achieve exceptional precision and clean cuts. These machines provide rapid cutting speeds and versatile capabilities, allowing us to effortlessly handle complex designs and varying material thicknesses.

Bystronic CNC Press Brake

These advanced machines ensure accurate, consistent bending results and handles complex tasks. By using Bystronic's Press Brakes, we streamline production and uphold the highest quality standards.



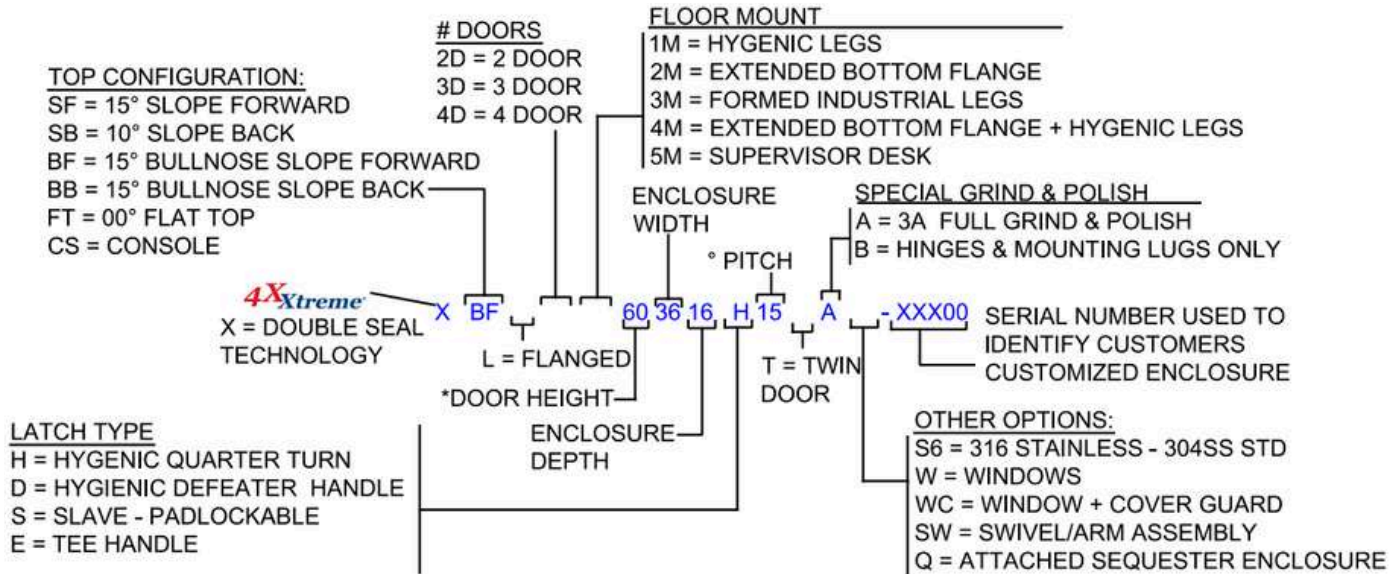
PART # SYSTEM: SINGLE DOOR ENCLOSURES



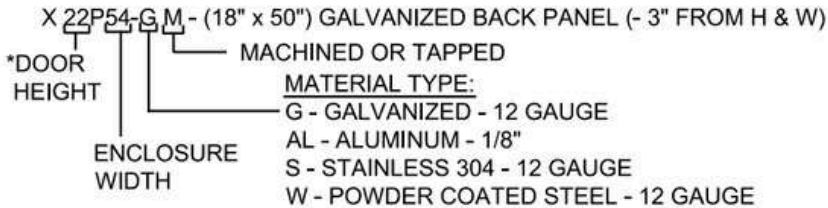
IP69K, IP69, IP66

Type: 4X, 4, 12, 3R, 3, 1

4Xxtreme
CUSTOM STAINLESS ENCLOSURES, INC.

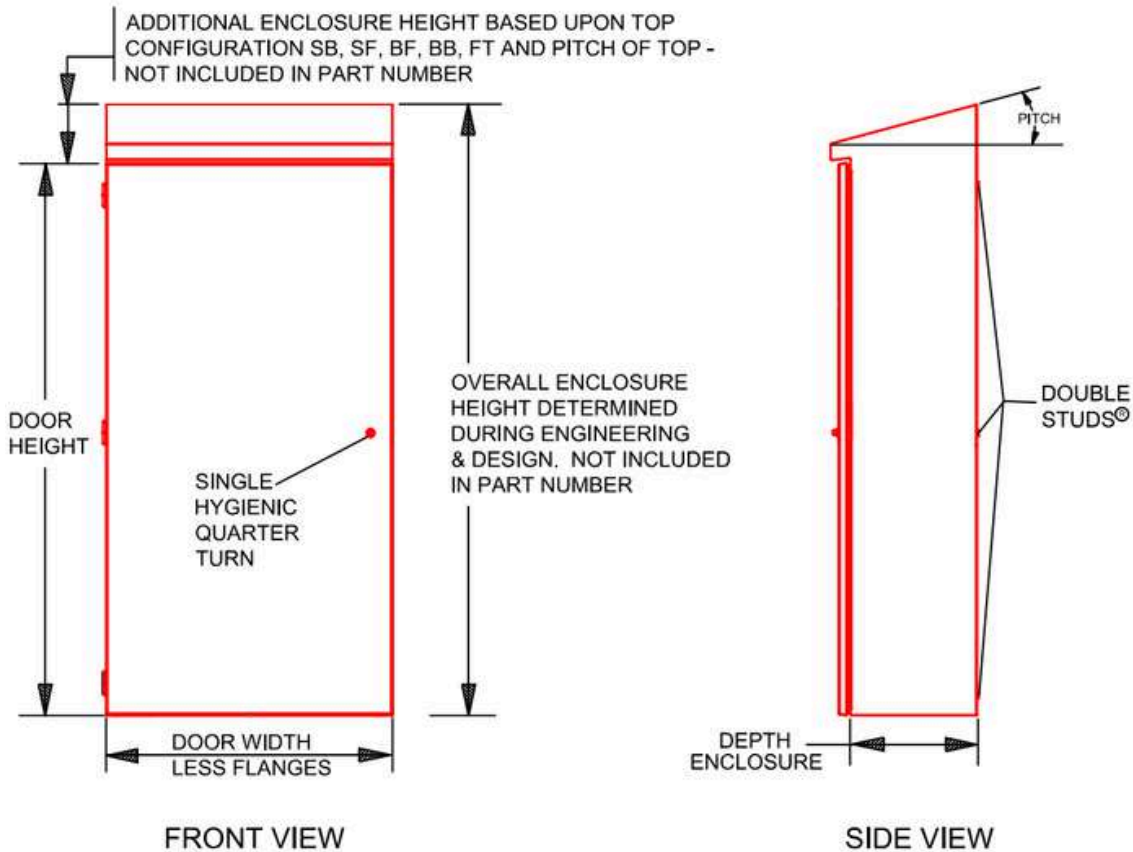


SINGLE DOOR - BACK PANEL PART # SYSTEM



NOTE: ALL DIMENSIONS ARE IN INCHES.

NOTE: * BACK PANEL PART NUMBER IS TYPICALLY BASED UPON ENCLOSURE SIZE



PART # SYSTEM: FLANGED SINGLE DOOR ENCLOSURES

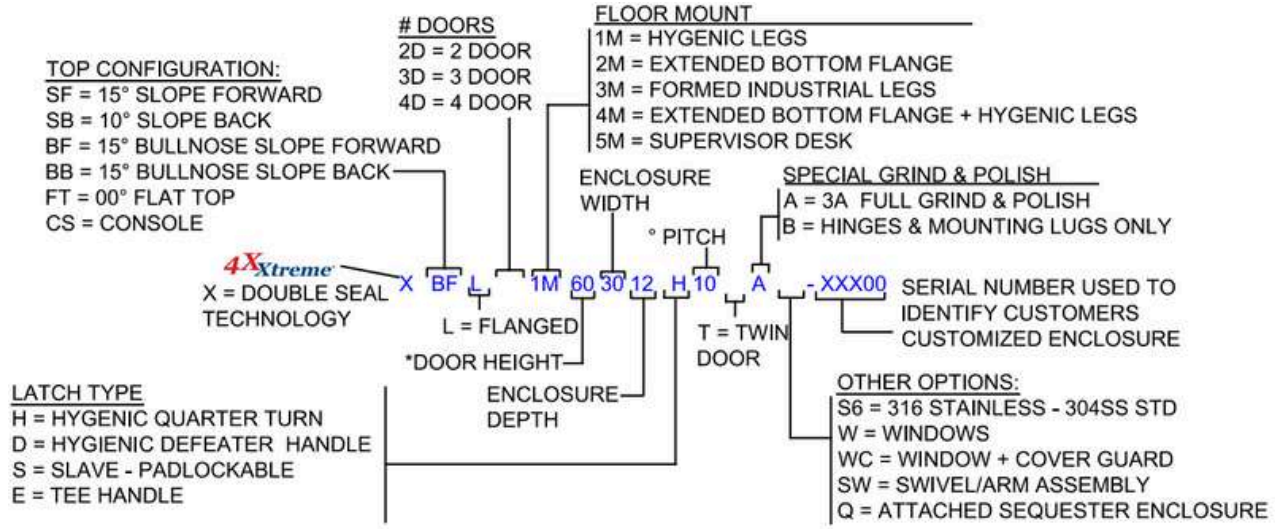


IP69K, IP69, IP66

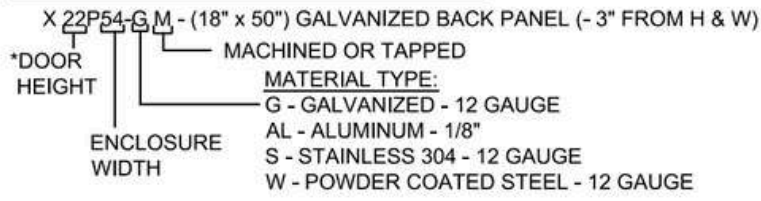
Type: 4X, 4, 12, 3R, 3, 1



CUSTOM STAINLESS ENCLOSURES, INC.

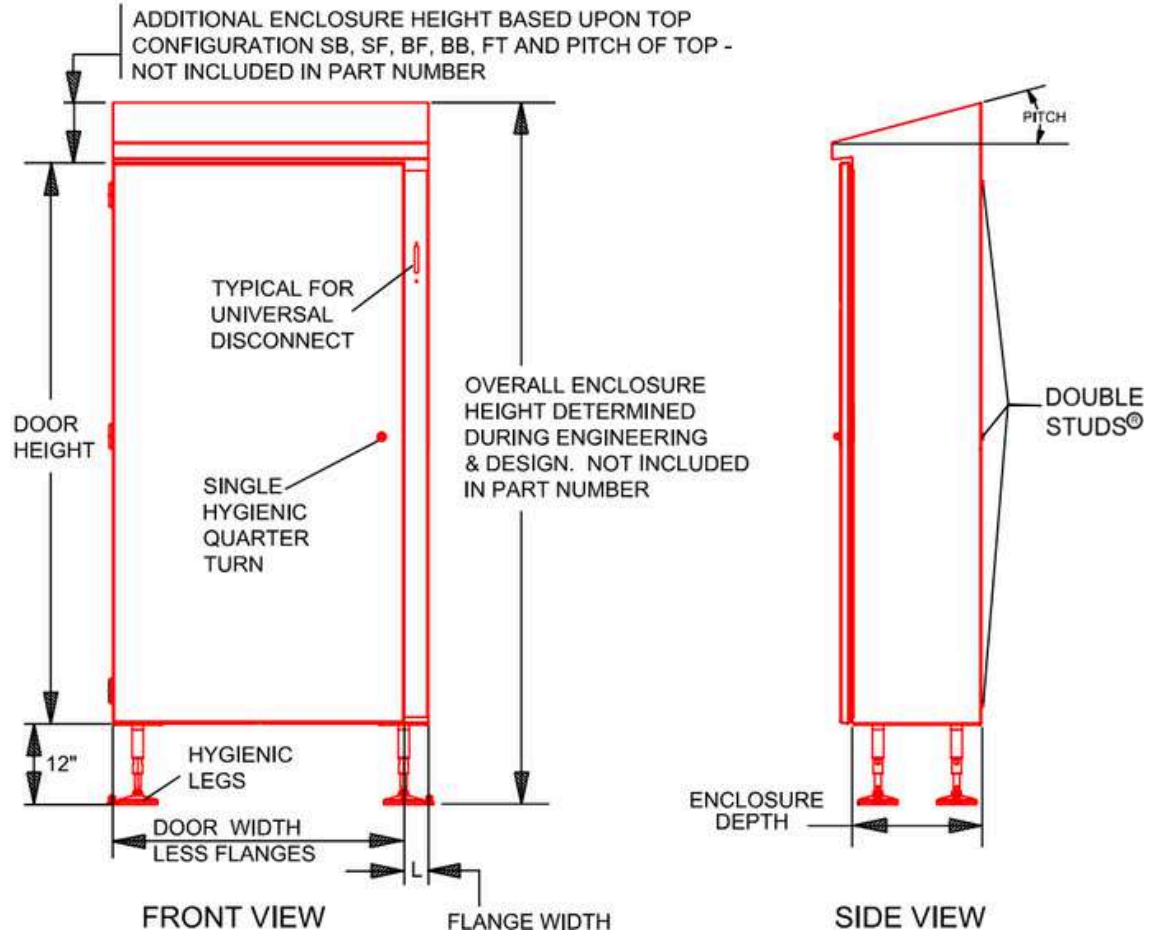


SINGLE DOOR - BACK PANEL PART # SYSTEM



NOTE: ALL DIMENSIONS ARE IN INCHES.

NOTE: * BACK PANEL PART NUMBER IS TYPICALLY BASED UPON ENCLOSURE SIZE



PART # SYSTEM:

SEQUESTER FLANGED SINGLE DOOR ENCLOSURES

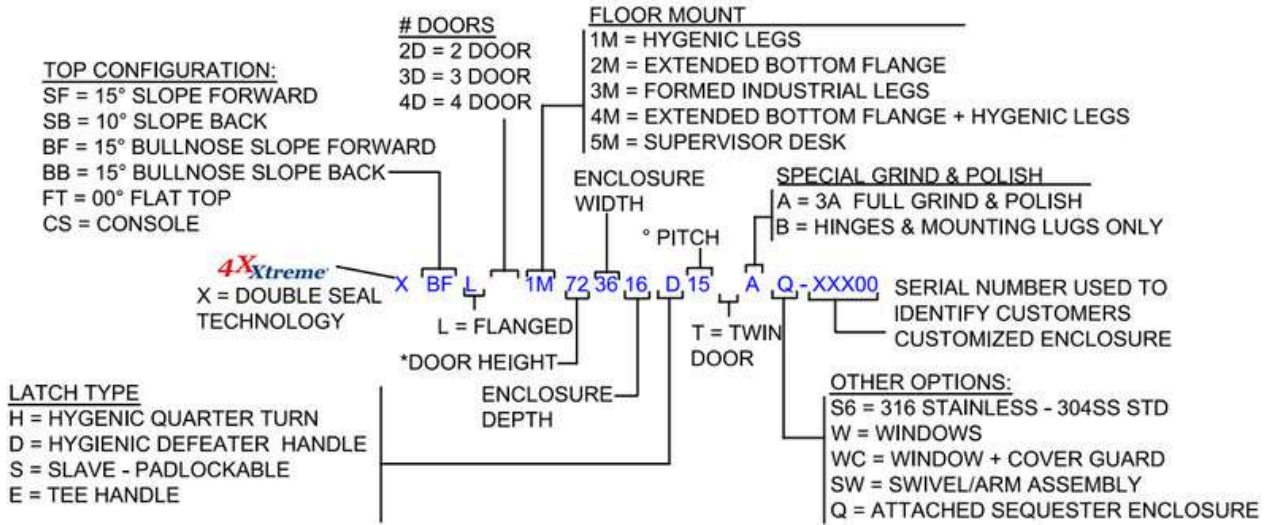


IP69K, IP69, IP66

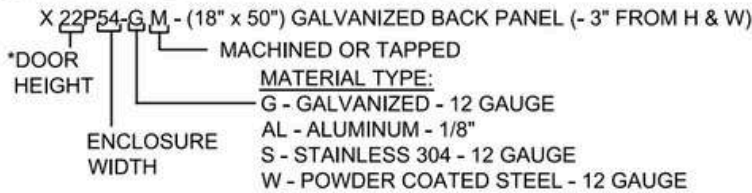
Type: 4X, 4, 12, 3R, 3, 1

4Xxtreme®

CUSTOM STAINLESS ENCLOSURES, INC.

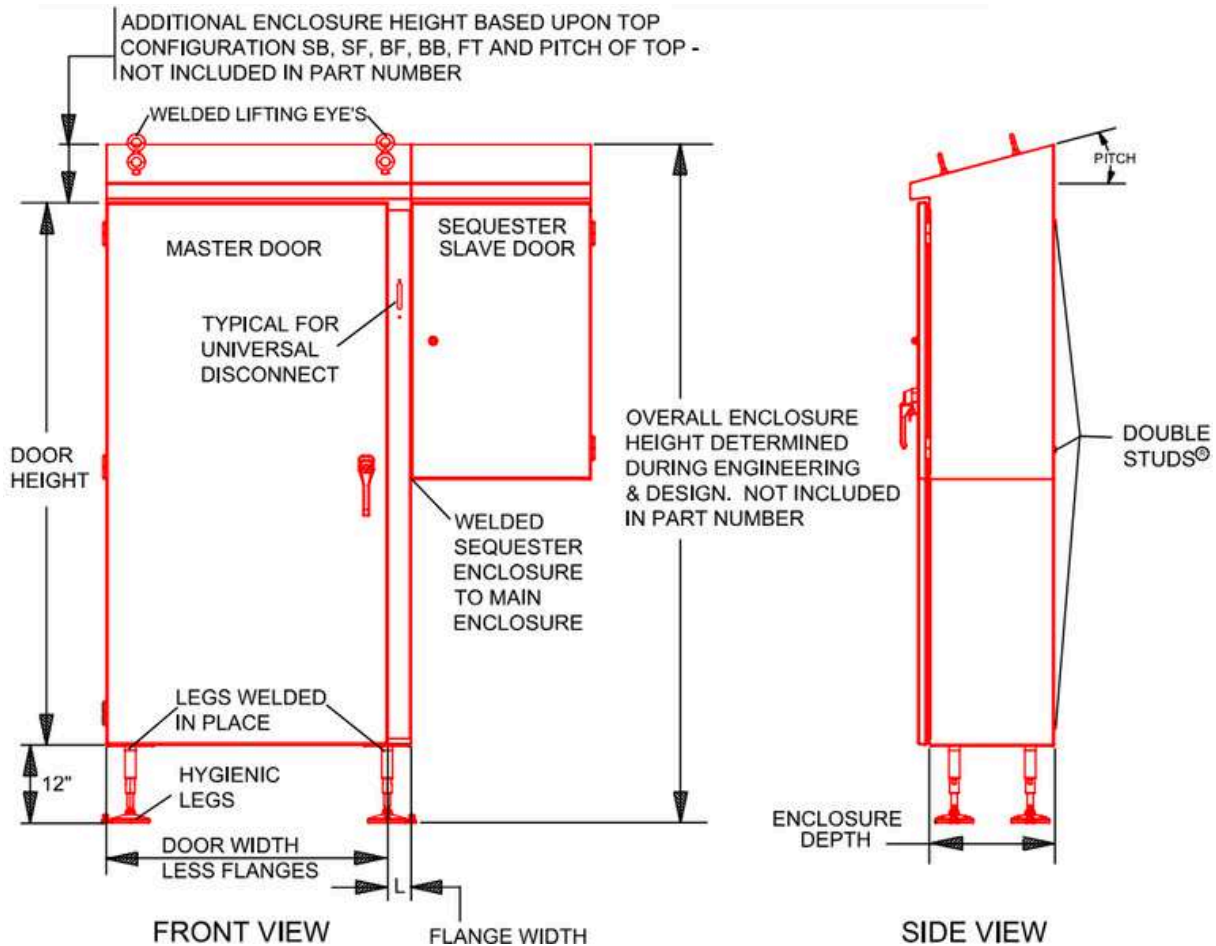


SINGLE DOOR - BACK PANEL PART # SYSTEM



NOTE: ALL DIMENSIONS ARE IN INCHES.

NOTE: * BACK PANEL PART NUMBER IS TYPICALLY BASED UPON ENCLOSURE SIZE

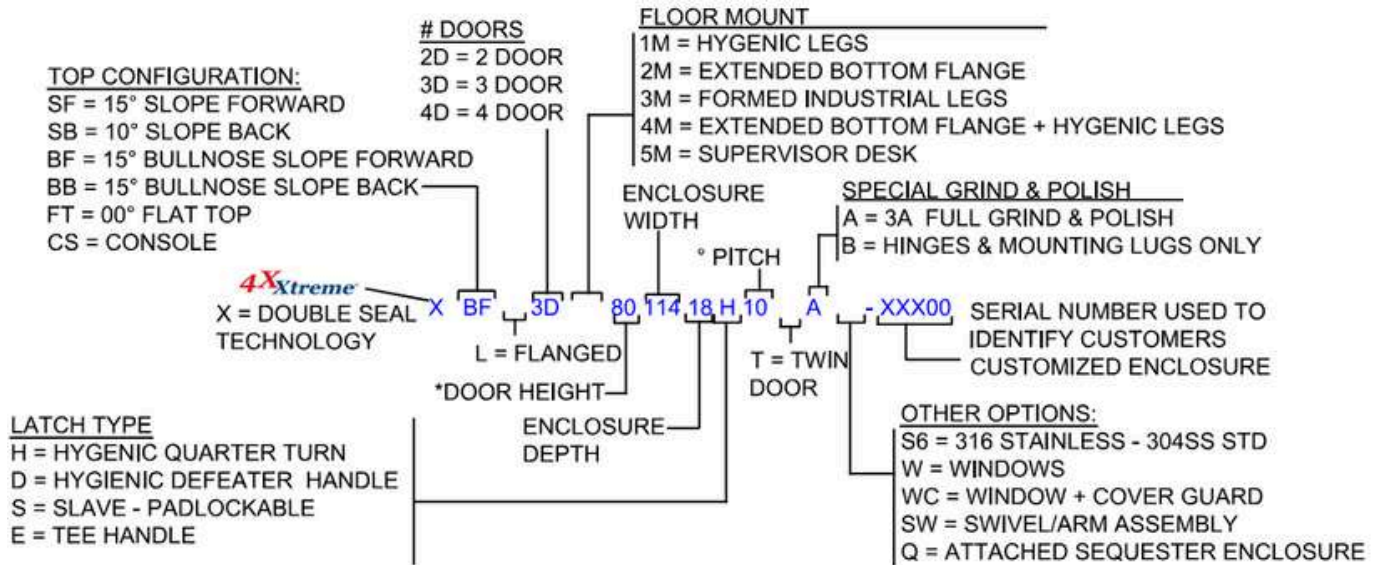


PART # SYSTEM: MULTI DOOR ENCLOSURES

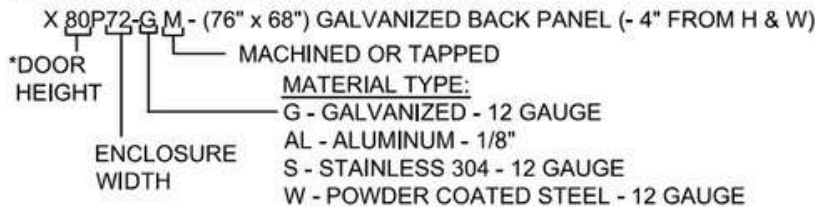


IP69K, IP69, IP66
Type: 4X, 4, 12, 3R, 3, 1

4Xxtreme
CUSTOM STAINLESS ENCLOSURES, INC.

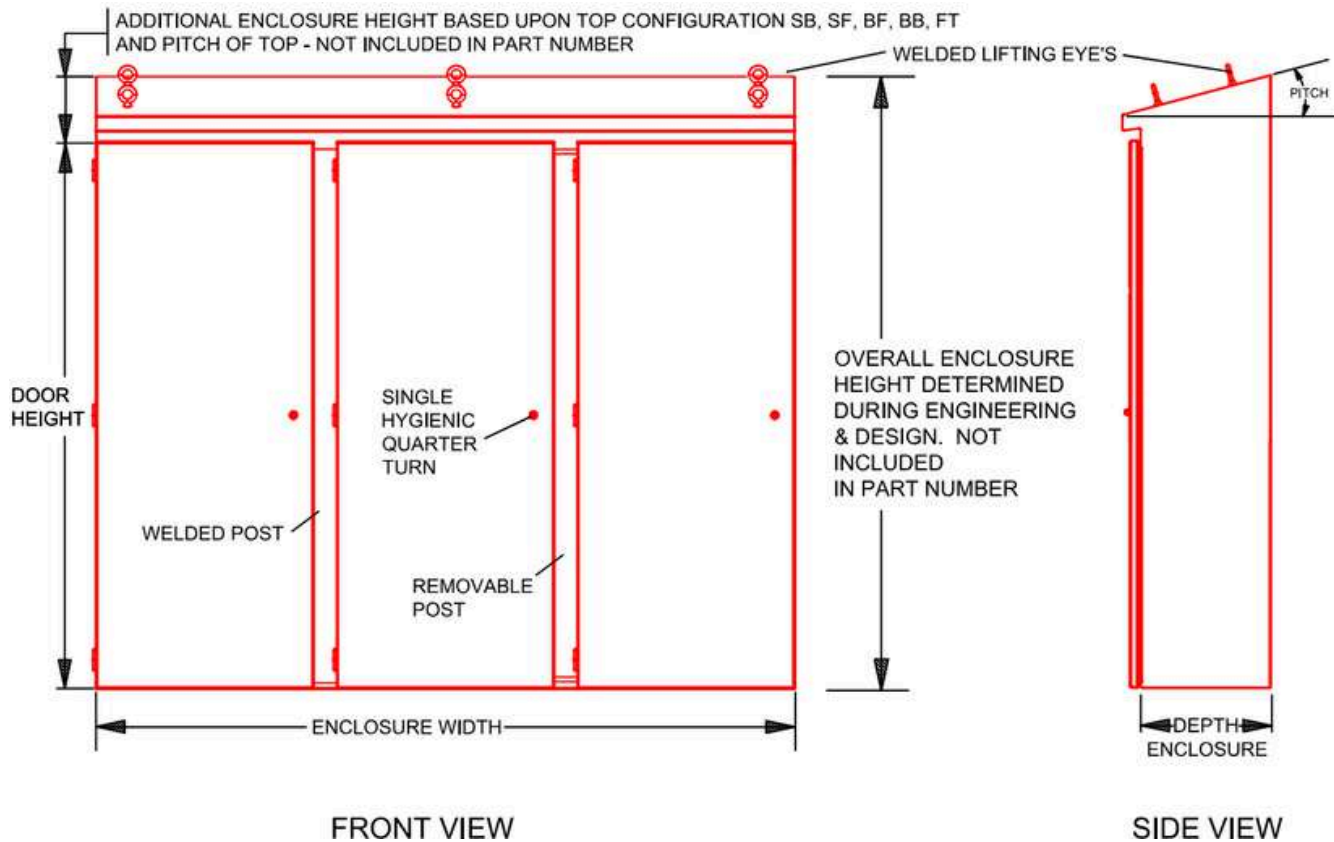


MULTI DOOR - BACK PANEL PART # SYSTEM



NOTE: ALL DIMENSIONS ARE IN INCHES.

NOTE: * BACK PANEL PART NUMBER IS TYPICALLY BASED UPON ENCLOSURE SIZE



PART # SYSTEM:

FLANGED MULTI DOOR ENCLOSURES

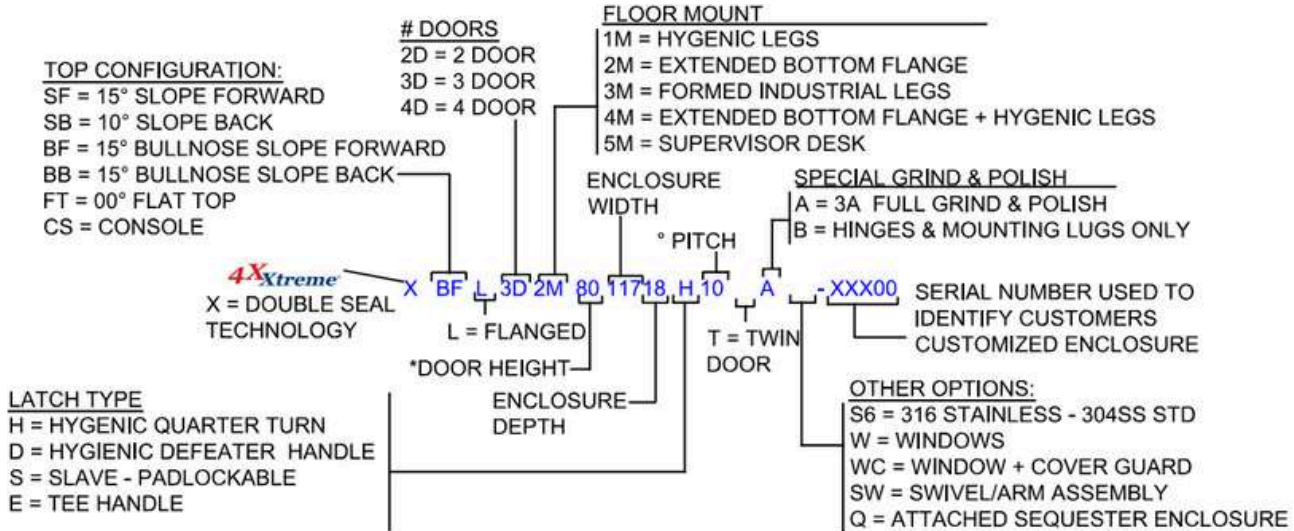


IP69K, IP69, IP66

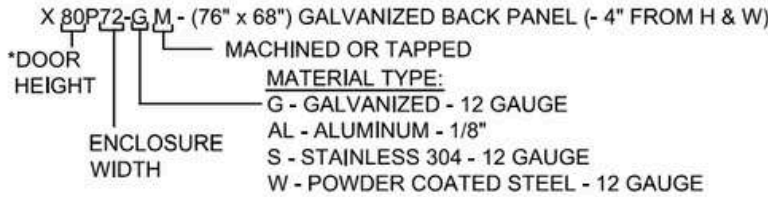
Type: 4X, 4, 12, 3R, 3, 1



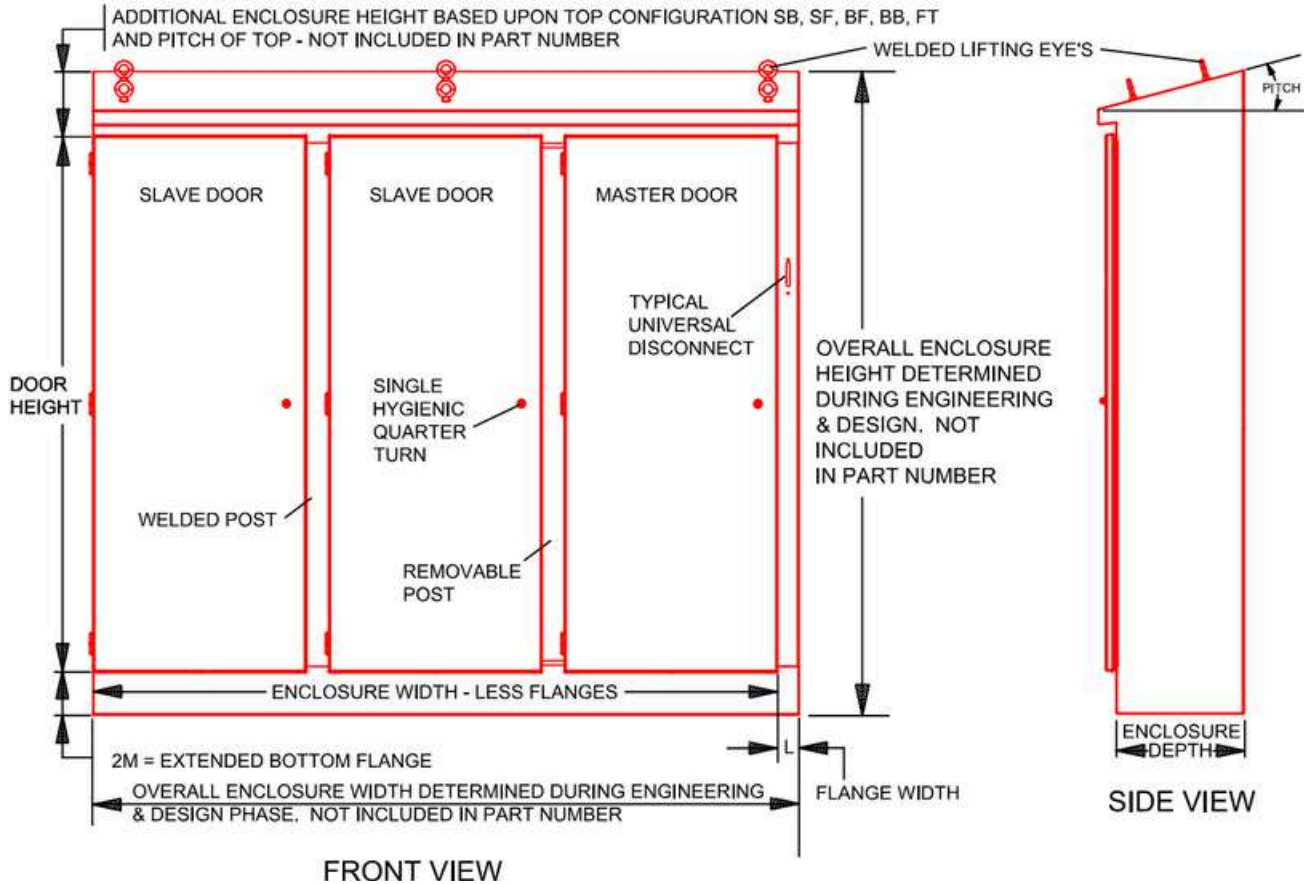
CUSTOM STAINLESS ENCLOSURES, INC.



MULTI DOOR - BACK PANEL PART # SYSTEM



NOTE: * BACK PANEL PART NUMBER IS TYPICALLY BASED UPON ENCLOSURE SIZE



PART # SYSTEM:

SEQUESTER FLANGED MULTI DOOR ENCLOSURES

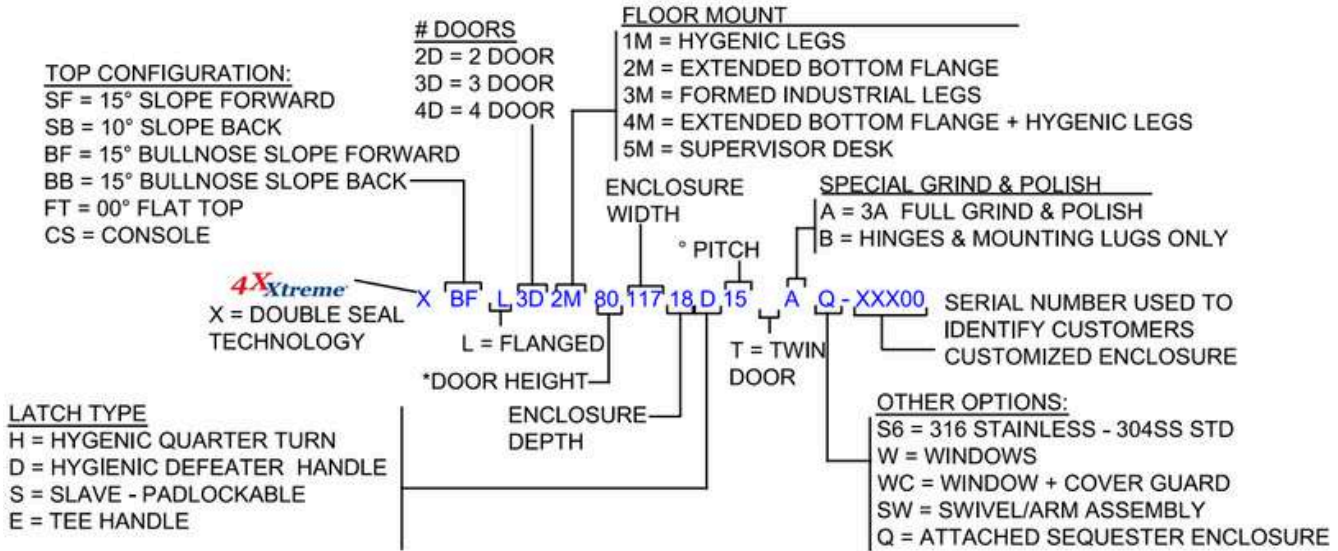


IP69K, IP69, IP66

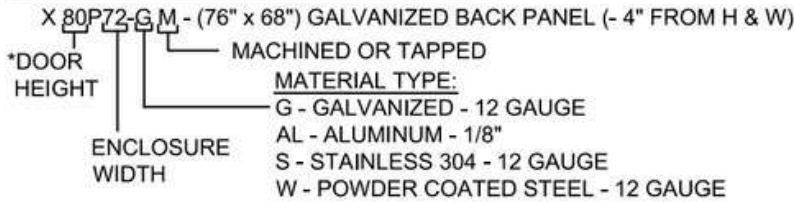
Type: 4X, 4, 12, 3R, 3, 1

4Xxtreme®

CUSTOM STAINLESS ENCLOSURES, INC.

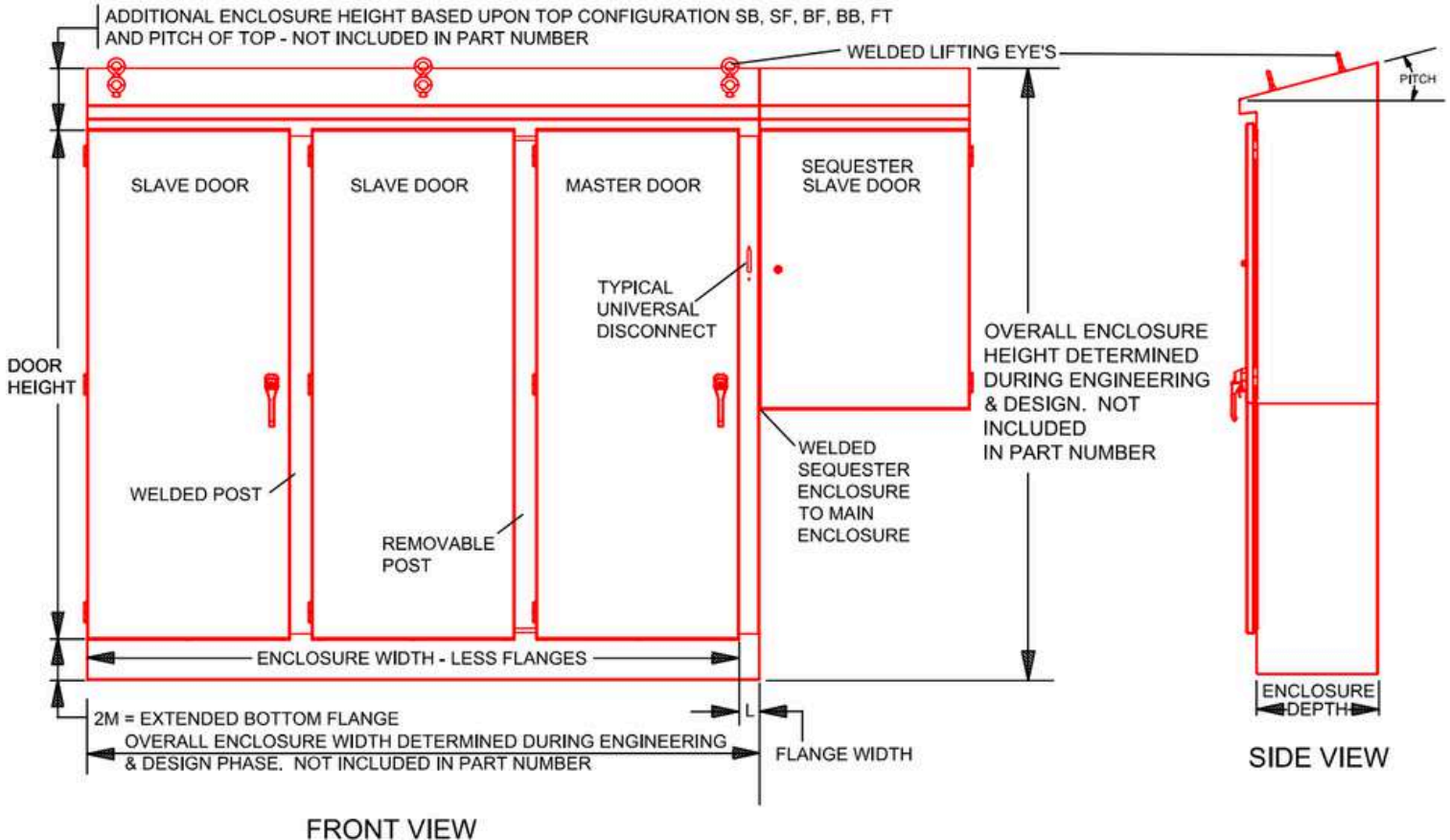


MULTI DOOR - BACK PANEL PART # SYSTEM



NOTE: ALL DIMENSIONS ARE IN INCHES.

NOTE: * BACK PANEL PART NUMBER IS TYPICALLY BASED UPON ENCLOSURE SIZE



PART # SYSTEM: CONSOLE ENCLOSURES

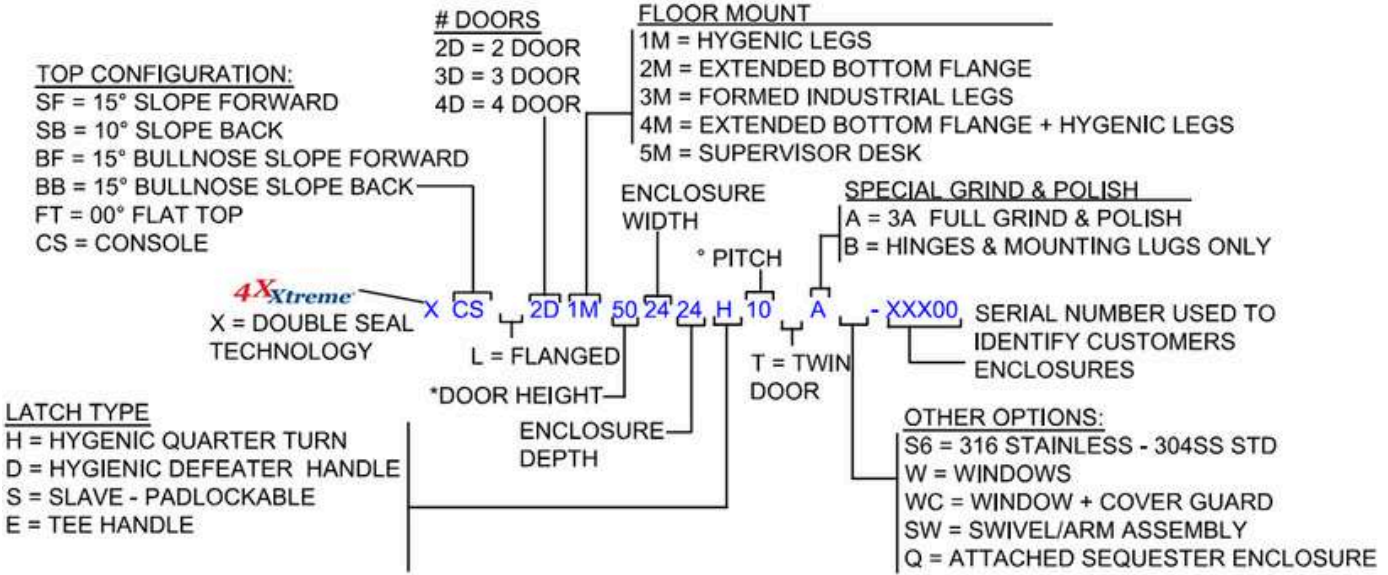


IP69K, IP69, IP66

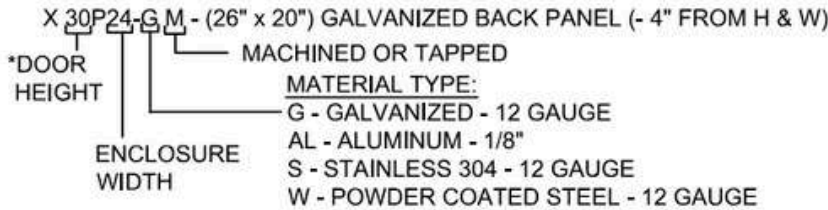
Type: 4X, 4, 12, 3R, 3, 1



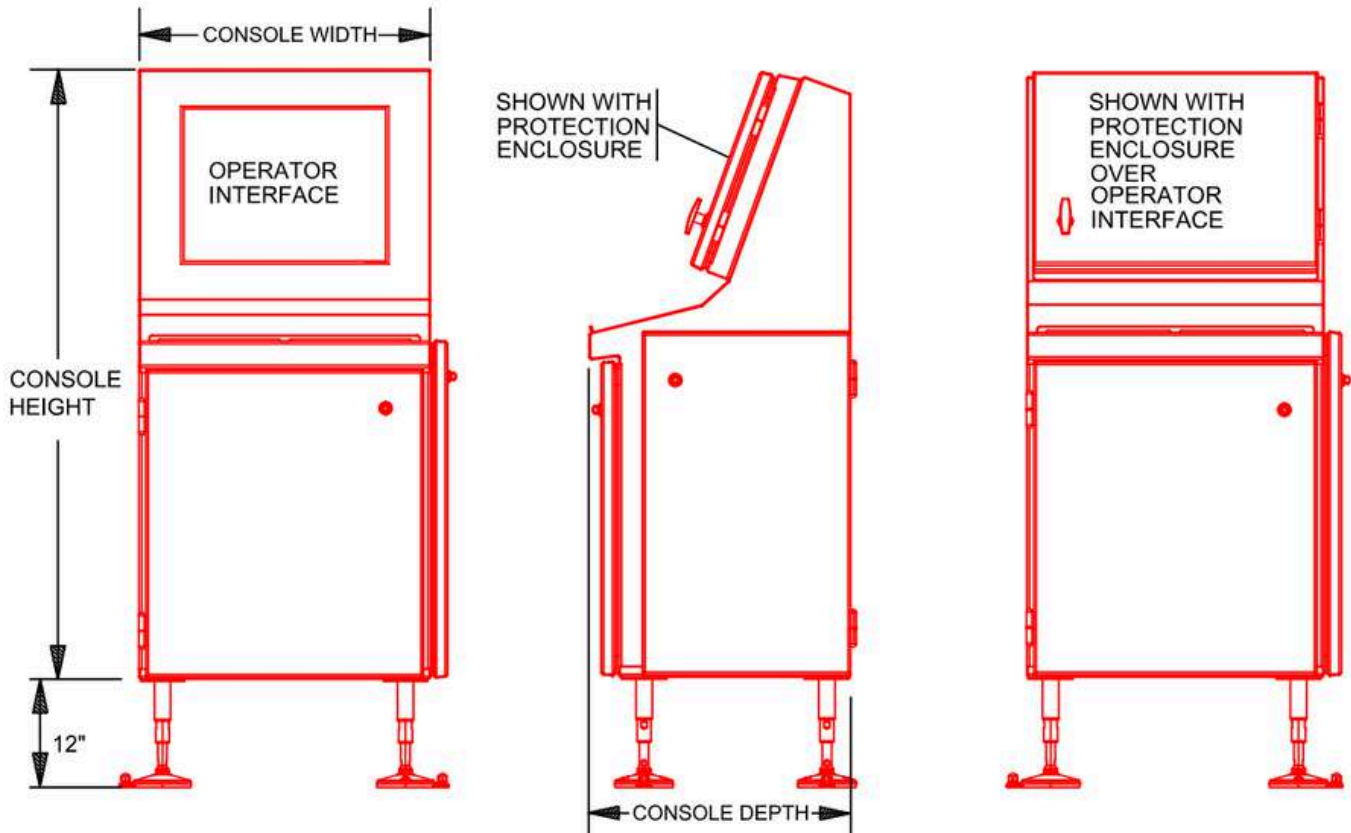
CUSTOM STAINLESS ENCLOSURES, INC.



MULTI DOOR - BACK PANEL PART # SYSTEM



NOTE: * BACK PANEL PART NUMBER IS TYPICALLY BASED UPON ENCLOSURE SIZE

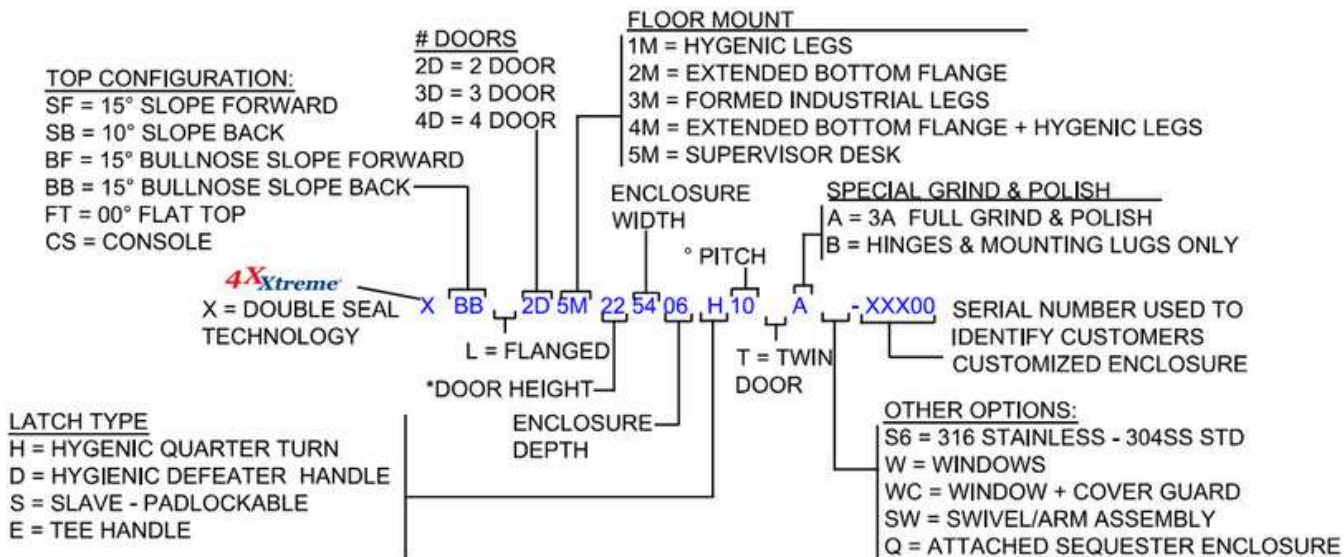


PART # SYSTEM: SUPERVISOR DESK ENCLOSURES

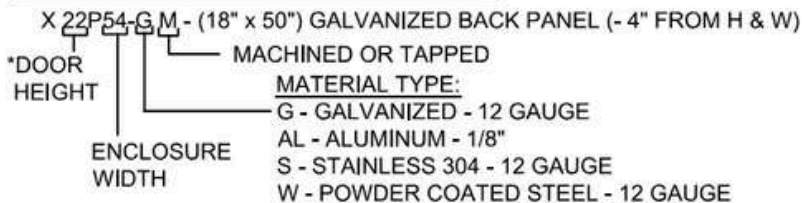


IP69K, IP69, IP66
Type: 4X, 4, 12, 3R, 3, 1

4Xxtreme
CUSTOM STAINLESS ENCLOSURES, INC.

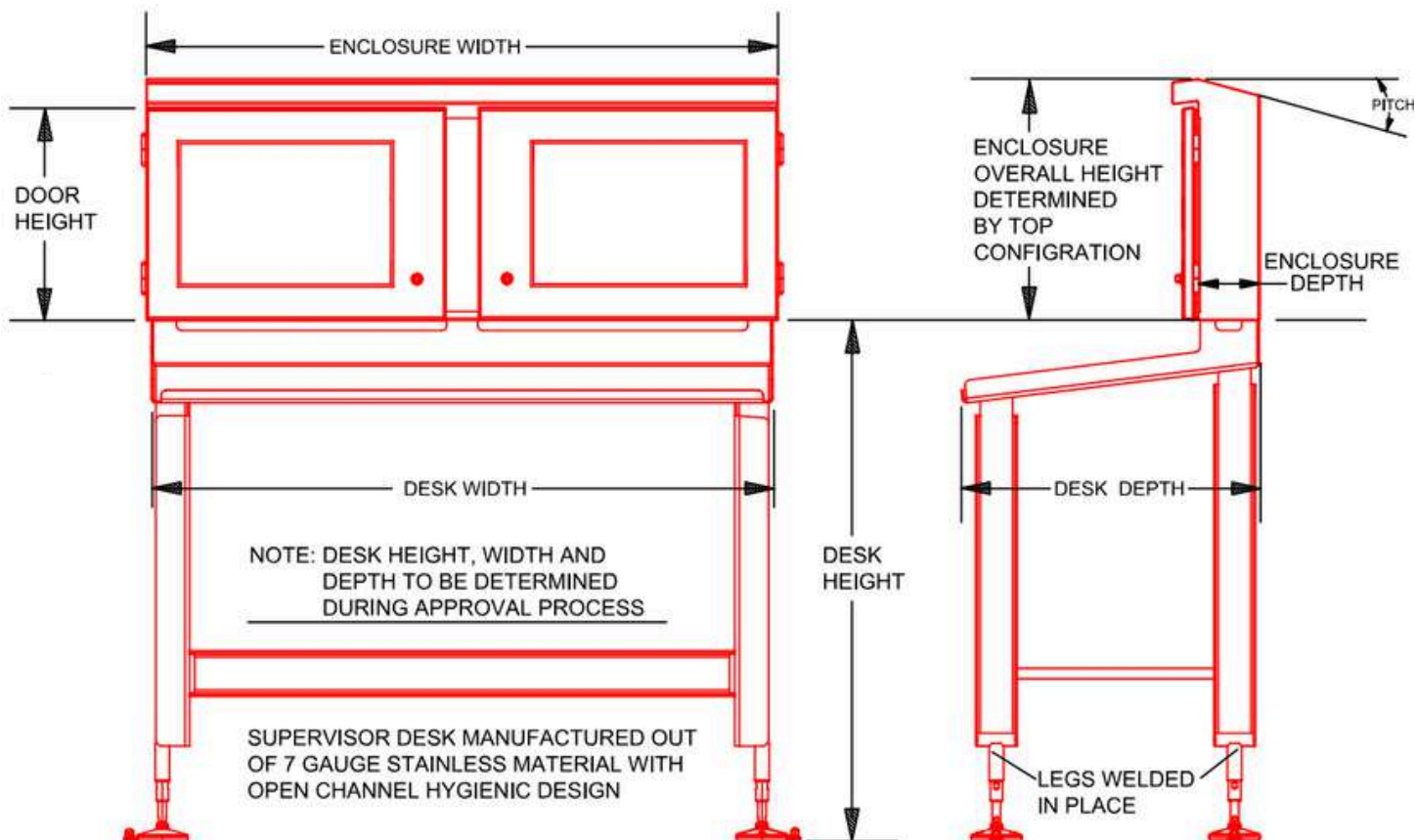


MULTI DOOR - BACK PANEL PART # SYSTEM



NOTE: ALL DIMENSIONS ARE IN INCHES.

NOTE: * BACK PANEL PART NUMBER IS TYPICALLY BASED UPON ENCLOSURE SIZE



THE **4X**Protect[®] DIFFERENCE

UL US LISTED TYPE: 4X

IEC Protection Ratings:
IP66, IP68, IP69K

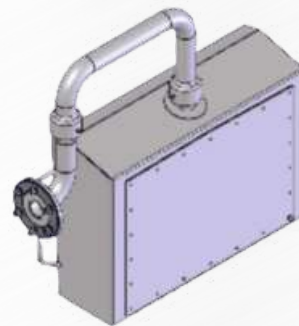
The 4XProtect[®] Enclosures are designed and tested to meet the highest industry standards. Utilizing advanced Silicone Gasket Technology, these enclosures ensure a perfect seal with no compression set. All units have sanitary cover bolts with a silicone O-ring seal for optimal hygiene and protection. The Ultra Clean Free Draining Design ensures easy maintenance and cleanliness. Our 3D modeling software allows for precise customization, ensuring your enclosures are built to your exact specifications. With a quick engineering turnaround and a focus on delivering the lowest cost of ownership, 4XProtect[®] Enclosures provide a combination of quality, efficiency, and value.

✓ **HMI ENCLOSURES WITH SWIVEL ARM DESIGNS**

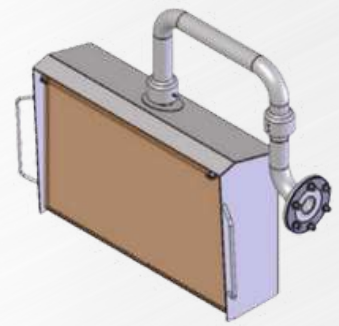
Install your Washdown HMI in our 4XProtect[®] Electrical Enclosure.

Options Include:

- Swing Arms
- Polycarbonate Water Shield
- Grab Handles
- Custom Sized for Your Application



**PRO-HMI ENCLOSURE
FRONT VIEW**



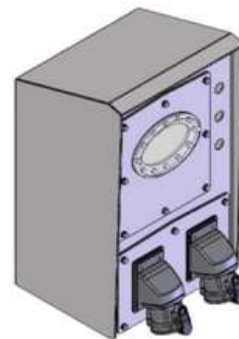
**PRO-HMI ENCLOSURE
BACK VIEW**

✓ **VFD ENCLOSURES**

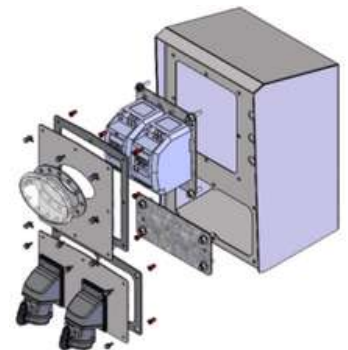
Install your NEMA Type: 1, IP10 Drives in our 4XProtect[®] VFD/VSD Enclosures.

Frame Sizes Available:

- Drive Frame Sizes 1-5
- Includes Drive Window



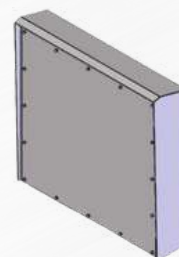
PRO-VFDS1



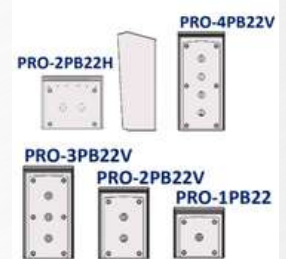
EXPLODED VIEW

✓ **PUSH BUTTON & JUNCTION BOX ENCLOSURES**

Push Button Enclosures and Junction Boxes are available in both standard and custom sizes to fit your requirements. These products are Hygienically Designed and can handle your harshest washdown environments.



**PRO-JB303008
JUNCTION BOX**



**PRO-PB
PUSH BUTTON**

PART # SYSTEM: PROTECT SERIES ENCLOSURES

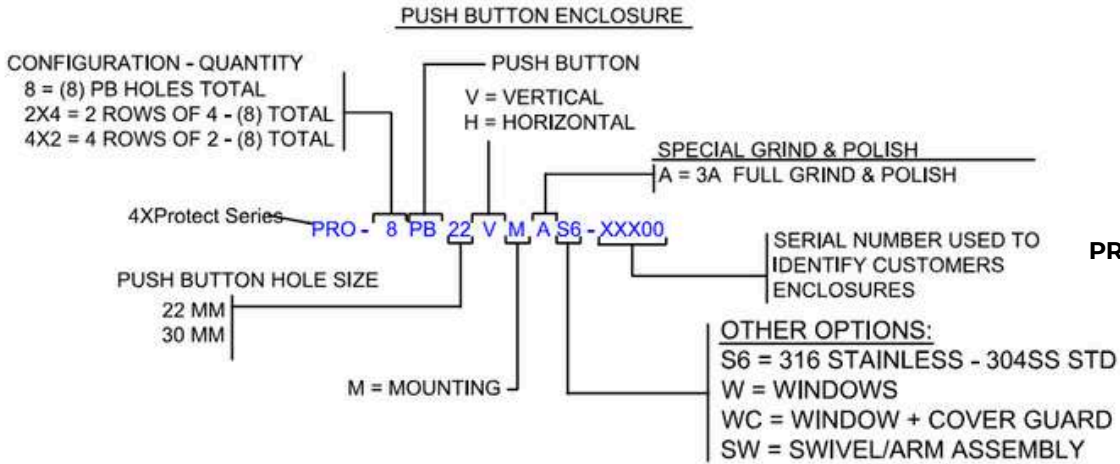


IP69K, IP68, IP66
Type: 4X, 4, 12, 3R, 3, 1

4XProtect
CUSTOM STAINLESS ENCLOSURES, INC.



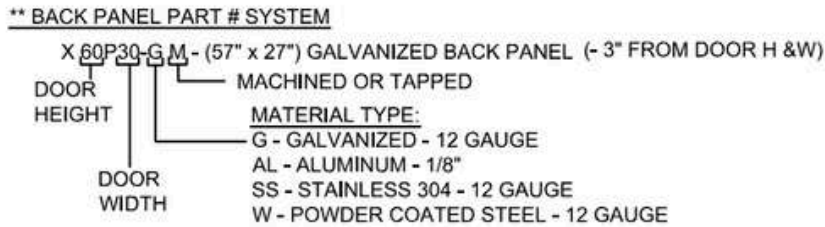
PRO-1PB22-000



PRO-4PBV30-MAG01

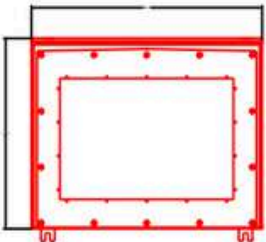


PRO-4X2PB22-000

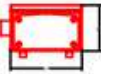
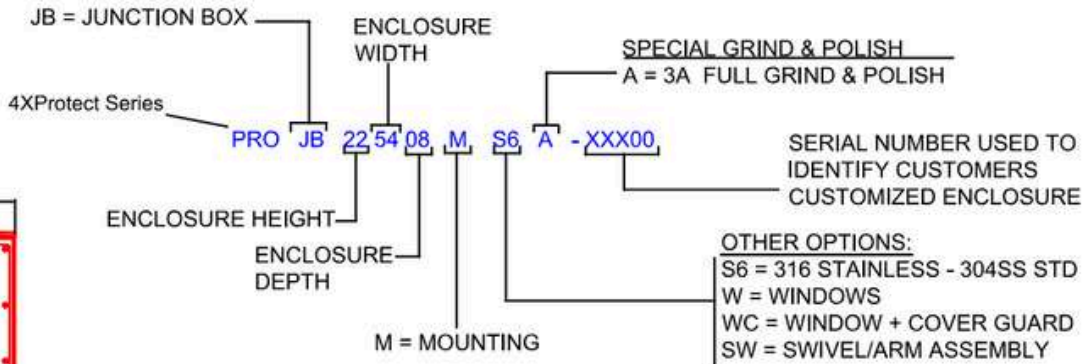


NOTE: * ACTUAL DOOR HEIGHT IS 1/2" TALLER THAN PART# SIZE
** BACK PANEL PART NUMBER IS BASED UPON DOOR SIZE

JUNCTION BOX ENCLOSURE

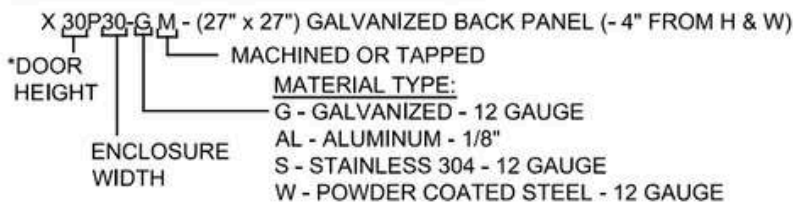


PRO-JB212606-EF01

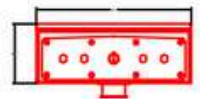


PRO-JB040903-FV01

MULTI DOOR - BACK PANEL PART # SYSTEM



NOTE: * BACK PANEL PART NUMBER IS TYPICALLY BASED UPON ENCLOSURE SIZE



PRO-JB040903-FV01

GET IN TOUCH



651-500-3650



4xxtreme.com



sales@4xxtreme.com



203 E 8th St, Marshfield, WI 54449



Type: 4X, 4, 12, 3R, 3, 1



IP69K, IP69, IP66, IP68